



MAKING LIVING.. WORTH LOVING...



Kalyan Sampat gardens

Project Powered by: KALYAN NAV NIRMAN LTD.

-HEAD OFFICE-

Vidyadeep, 15/3 Manoramaganj, Near Geeta Bhavan, Indore
Ph +91 731 4088174, 3205094

-SITE OFFICE-

Bicholi Mardana, Behind Vaishnav Dham Temple,
Near Agrawal Public School, Indore
Visit us: www.kalyannavnirman.com

E-mail: sales@kalyannavnirman.com, kalyannavnirman@rediffmail.com

This brochure is purely conceptual and not a legal offering. All the above photographs are illustrative only. All rights are reserved with builders/promotor to make any change in specifications/amenities/elevations mentioned and may revise the area mentioned if so warranted by the circumstances.

Printtime >>> 0731 2548701



Kalyan Sampat gardens

A NAME OF TRUST

*A Place Where You Get Complete Value
For Your Hard-Earned Money...*



◆◆ दिल के नज़दीक, एक सुरक्षित व सर्व सुविधायुक्त जगह,
अब आपकी पहुँच में..... ◆◆

Kalyan Sampat gardens

Welcome to the new era of living

Kalyan Sampat Gardens is a contemporary age, completely harmonized township, which is designed in such an inventive style, to make you meet this authentic reality.

Kalyan Sampat Gardens is a place where you can lead a genuine, true and heartfelt way of living. Besides this, you can experience a completely new vogue of living and enjoy the ride of being in a well synergised township which will make you feel complete. Our trusted promoters have come up with a new concept of realism.

We do not want to show artificial dreams, but we want to offer you the reality. A place close to your heart, fulfilling your real needs, giving true value to your pocket, now is in your reach.

Journey at a glance

A union of 2 ultimate groups result into the best. Here the two exalted groups are 'The Kalyan Group' and 'The Sampat Group', which are coming together to serve an excellent degree of quality, construction and design to Indore. 'The Kalyan Group' is in construction business since 1984, remarkably renowned for its excellent quality of construction. The latter is 'The Sampat Group' which has created an impressively grand name in the race of real estate and the group has given many diverse real estate projects to the city. The two groups have also worked together earlier and created some of the best projects like.. Empire Estate, Empire Heritage & Sampat Valley, which are notably known to the city. And now the two groups are back with a housing project 'Kalyan Sampat Gardens' to create a big name in housing industry.



Conceptual
Phase-2

❖ बड़े लोगों का छोटा परिवार नहीं, आम आदमी का बड़ा परिवार है यह
आईये और हमारा परिवार पूरा कीजिए... ❖

Kalyan Sampat gardens

A Perfect Combination Of Price & Quality...

Phase-1

Overview

Kalyan Sampat Gardens is aspired for its quality.
Its tender sense of honour & style is unique.
The distinguished quality
construction that will be offered is bound to set
new magnitude in the housing construction industry.

Kalyan Sampat Gardens is definitely
going to be a true value for your hard earned money by
delivering you an entirely new life style
& furnishing your life with contemporary needs.

Kalyan Sampat Gardens has a
cost effective maintenance and is a
classic combination to match
the requirements of children &
elders by satisfying their needs and addressing
them stature class services.

All in one, it is worth an endeavour.. !!

The township is basically divided into
6 different blocks with
a giant entrance gate in its first phase
and in second phase
of construction, 4 other blocks will be constructed, in
which one block will be purely a shopping complex.

So if you are one of those
who are planning to grab the lavish reality,
get ready to experience the royalty at its finest
at KALYAN SAMPAT GARDENS.



Planning

Highlights

Central Plaza



♦♦ अब यह कहना सही नहीं कि थोड़ा है, थोड़े की जरूरत है ..
क्योंकि कल्याण सम्पत गार्डन्स जाए हैं
बेहतरीन अपार्टमेन्ट्स व सभी सुविधाएँ कम कीमत पर.. ♦♦
Kalyan Sampat gardens

- **COMPLETE VALUE FOR MONEY**
We understand the worth of your hard earned money, so we provide as many facilities, as we can, in the price we are offering.
- **SAFE & PROTECTED PLACE**
Kalyan Sampat Gardens (located before By-Pass, in Bicholi Mardana) is like a big family; a very safe & protected place which covers your inner world of joy & peace.
- **COST EFFECTIVE MAINTENANCE**
Kalyan Sampat Gardens is designed such that the maintenance for the residents is very cost effective.
- **PODIUM GARDEN**
It is designed such that ladies can enjoy see their children playing from their balconies as every balcony opens at a common place - The Podium Garden. Also, it is free from any vehicular interference as it is vehicle free zone. A podium garden connected directly to every block, a step required to experience the heavenly delight, designed to suit the true philosophy of this urban society.
- **2 SIDE VENTILATED FLATS WITH ATTACHED BALCONY**
Well designed and 2 side ventilated flats attached with vast Balconies & Terrace. The terrace and balconies are at lift level.
- **2-LEVEL GARDENS**
Two level gardens to activate the interactions connected through designer steps to enhance the idea of outdooring and a theatrical impact.
- **EARTHQUAKE RESISTANT STRUCTURE**
The structure & design made by our experienced architects is completely resistant against seismic waves & other natural calamities.



Central Plaza

Practical Features

- **THE HUGE ENTRANCE**
Huge entrance gates with large arrival spaces at entrance to portray the stature of Kalyan Sampat Gardens.
- **POWER BACK-UP**
A continuous power supply with an adequate power back-up for common areas and provision of inverter points.
- **MULTI LEVEL SECURITY**
2 level security for 24-hours to the residents to protect their internal world of joy and peace.
- **WI-FI ZONE**
A part of campus has got a Wi-Fi connectivity.
- **INTERNAL CONNECTIVITY**
Door to door internally connected by Intercom.
- **WATER RECYCLING**
 01. Water harvesting in full campus.
 02. Recharging of water for gardens.
 03. In Parking, provision of water taps at regular intervals for car washing and that water is recycled for use.
- **GREENARY**
Kalyan Sampat Gardens is developing great gardens and stimulating greenary so as to give the residents a fresh, environmental friendly and oxygenated atmosphere there itself.
- **SPACIOUS LIFTS**
There are minimum 2 splendid lifts (and 2 staircases) in every residential block escalated with supreme quality and entire safety standards.
- **COVERED PARKING FOR ALL FLATS**
A spacious and covered parking for all the residents with well ventilated and lighting arrangements.
- **FIRE SAFETY MEASURES**
 01. Fire extinguishers.
 02. Other fire safety equipments.
- **GARBAGE MANAGEMENT SYSTEM**

Arrival Plaza



♦♦ एक आम आदमी की बड़ी सोच को पूरा करने के लिए एक विश्वसनीय गुण ♦♦

Kalyan Sampat Gardens



Arrival Plaza

Amenities

CENTRAL PLAZA...

- **CLUB**
A royale gym with advance techniques, machines to guide you the right way of exercising. This spacious club also includes a steam bath & changing rooms for men & women.
- **JOGGING TRACK**
An exclusive jogging track for the residents to carry their regular jogging, daily exercises and morning walks.
- **ACTIVITY CENTRE**
An indoor children's activity centre with library, play equipments, which can be used for different indoor activities with a maid to look after.
- **MULTIPURPOSE HALL**
A multipurpose hall to be used for yoga, meditation, dance classes, hobbies, exhibitions, shows and parties decked up with a powerful musical set-up.
- **SWIMMING POOL**
The residents will enjoy a well designed swimming pool to refresh and rejoice.
- **HUGE GARDEN**
A garden for community gatherings, festivals, celebrations & for children's outdoor play area with swings.

SPORTS PLAZA...

- A demarked area at Podium level (level1), having flood lights to play various outdoor games like ..
- Net Cricket with soft ball
- Basket ball practice
- Outdoor Badminton
- Volley ball etc. (can be played, one game at a time)
- Note : Demarcation done in Sports Plaza, for various games at one place may not suit to their standard dimensions. This is done only for fun and practice purposes.

HEALTH PLAZA...

A huge health park with full-on greenery to suit the elderly, with wide garden spaces to be used for socio-cultural gatherings, an evening place for ladies to gossip about the day's happenings.

TOT-LOTS PLAZA...

A kids play zone for their teeny & tiny games.

TEMPLE PLAZA...

A temple locale for day-to-day reverence and an ample area for festivals, customs, practices and poojas.

FURNISHED GUEST HOUSE...

Stylish & luxurious furnished Guest House to provide your guest supreme hospitality with utmost care at very economical rates.

Tot-Lots Plaza



◆◆ इस असुरक्षित दौर में एक सम्पूर्ण सुरक्षित जगह.. ◆◆
Kalyan Sampal gardens



Central Plaza With Gazebos/Tracks

Specifications

Temple Plaza



❖ आपकी जमा पूँजी का सही दाम ❖
Kalyan Sampat Gardens

DOORS/SHUTTERS...

- Large aluminium sliding french door opening to balcony.
- Main door: Solid core moulded door with S.S. fittings.
- Internal: Both side laminated flush doors with brass/S.S. fittings.
- Toilet doors: Flush doors oil painted.

WINDOWS...

- Aluminium powder coated windows with 2 track 2 shutters.
- Marble / Granite window sills.

FLOORING...

- 2'x2' vitrified flooring tiles for the entire house, excluding bathrooms
- Toilets: Ceramic flooring in bathrooms with designer tile dado upto door height.

KITCHEN...

- Granite Kitchen counter
- Steel Sink & matching good quality wall tiles dado upto window sill height.

SANITARY WARE...

- High quality sanitary ware matching dado
- All Toilets with European w/c, with washbasin and bath area.
- Premium plumbing fitting with Hot & Cold mixer for shower.

ELECTRICAL...

- Exhaust fan and electric appliance point in Kitchen
- Modular switches in hall. Anchor/CPL or equivalent and plate switches in the entire house.
- Miniature circuit breakers (MCB) in concealed powder coated box.
- Concealed copper wiring running through PVC conduits.
- Anchor/Finolex or equivalent make ISI electrical wire.
- T.V. and Phone points in living room & master bedroom

WALL FINISH...

- Decorative water proof paint in two coats on exterior walls.
- Acrylic Plastic emulsion on inner walls.
- Branded Plastic water proof Paint.

All amenities / specifications shown in this page are tentative and subject to change without notice.



Sports Plaza (2-Level Garden)

Kalyan Sampat Gardens
Making The Night Even Beautiful...

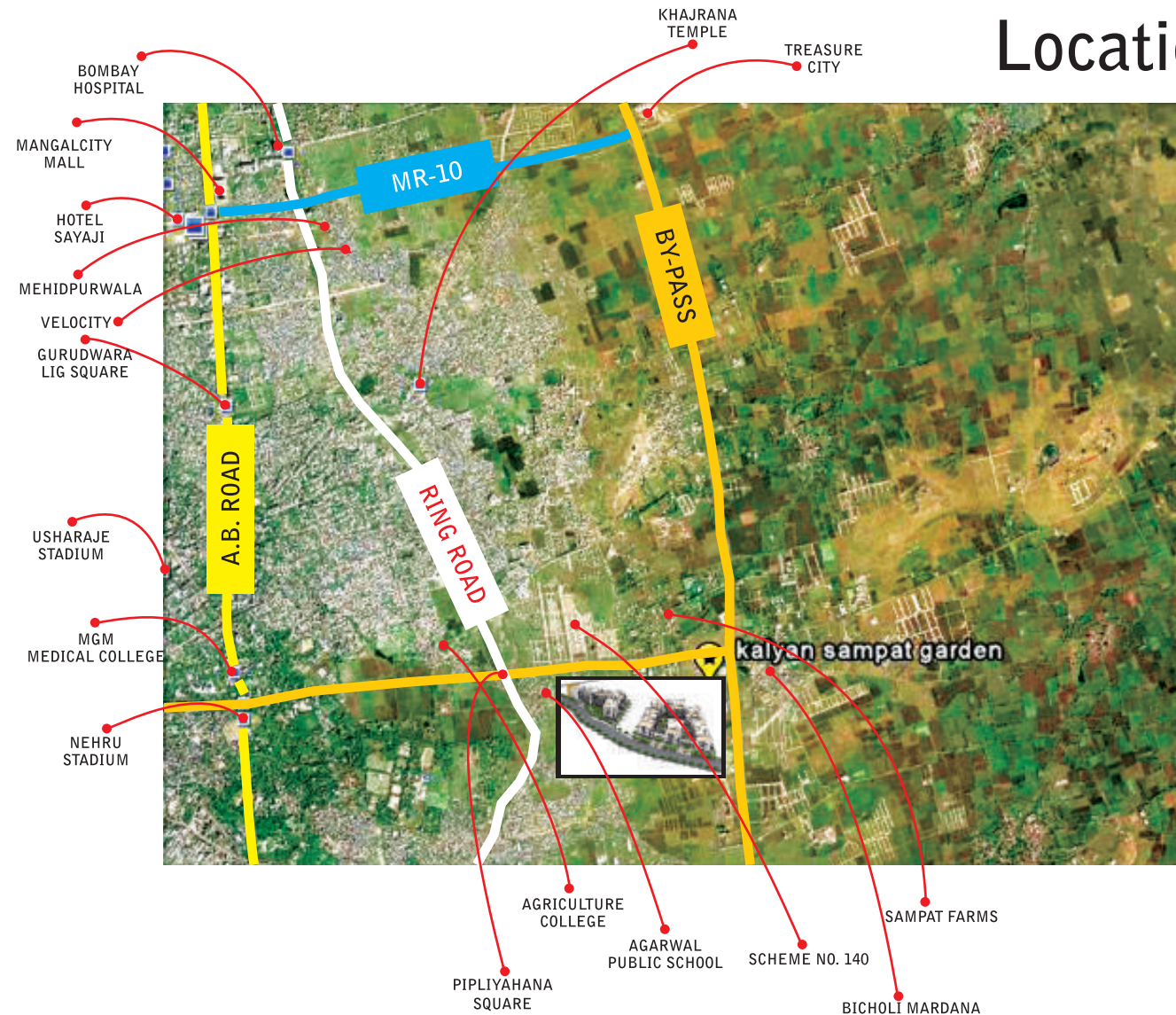


Master Blueprint



The Parking





Location Map

Now Everything Close To You.
Kalyan Sampat Gardens is located at Bicholi Mardana Square before By-pass on major link road, connecting Ring Road, near Vaishnav Dham Temple.

Kalyan Sampat is situated at a place which is developing at a very fierce rate. Though it is a self-contained township, but basic facilities like School, Petrol Pump, Colleges, Hospitals etc. are conveniently approachable within an easy reach.

कल्याण सम्पत गार्डन्स

कल्याण सम्पत गार्डन्स वास्तुनुरूप सुनियोजित, प्राकृतिक सुन्दरता के बीच, हरियाली से घिरा, टाऊनशिप है, जहाँ अनेक आकार के सर्वसुविधायुक्त 2 बीएचके, 3 बीएचके, 4 बीएचके के फ्लैट्स हैं। एक विशिष्ट एवं आरामदायक जीवनशैली जीने के लिए कल्याण सम्पत गार्डन्स आधुनिक सुविधाओं से परिपूर्ण होगा।

इसकी लोकेशन व आसान पहुँच दोनों ही आपको आकर्षित करती हैं। यह एम.वाय. अस्पताल से मात्र कुछ ही मिनटों की दूरी पर तथा बायपास से बिल्कुल नजदीक है। इसका भव्य व आकर्षक प्रवेश द्वार, खुली चौड़ी-जगमगाती सड़कें, हरे-भरे गार्डन, सुनियोजित आधुनिक सुविधाएँ जैसे...

- खुली व बड़ी लिफ्ट्स
- कवर्ड पार्किंग
- पोडियम गार्डन
- मंदिर
- 2 लेवल गार्डन
- पॉवर बेक-अप
- पर्याप्त पानी
- 2 लेवल सिक्योरिटी
- वाई-फाय जोन
- फायर सेफ्टी इक्यूपमेंट
- वॉटर रिसाईकल/रिचार्जिंग
- जिम
- जॉगिंग ट्रेक
- बास्केटबाल कोर्ट
- स्केटिंग रिक
- स्वीमिंग पूल
- किड्स प्ले एरिया
- हेल्थ पार्क
- मल्टीपरपज हॉल

इत्यादि आपको इस टाऊनशिप में रहने के लिये आमंत्रित करते हैं।

PRINCIPAL ARCHITECT -
 L.S. Vaswani Architects Pvt. Ltd.
 Indore & Bhopal

LANDSCAPE CONSULTANT -
 The Susmit SV, Indore

ELECTRICAL CONSULTANT -
 Trouble Shooters, Indore

SANITRY AND PLUMBING CONSULTANT -
 Vraj Sanitation, Baroda

STRUCTURAL CONSULTANT -
 Arjav Upadhyay & Associates, Indore

११ हम सपने नहीं दिखाते
 हम तो आपको सच्चाई से मिलवाते हैं ११
 Kalyan Sampat gardens

DATES OF APPROVAL -
 Approved by Department of T & C P. vide
 Registration No. - 3547/LY-172, dated - 19.06.09

• Department of Sub-divisional Officer (Revenue),
 Collectorate, Indore, Permission for development -
 approval No.- 1998/CE/2009 dated- 05.10.09

• Certification from Gram Panchyat vide
 No. Q/2009, dated 20.11.2009.

• Diversion vide letter No. 2099/A2/03-04 dated
 20.08.2004.

PROJECT APPROVED -
 Finance available from all leading Financial
 institutions.